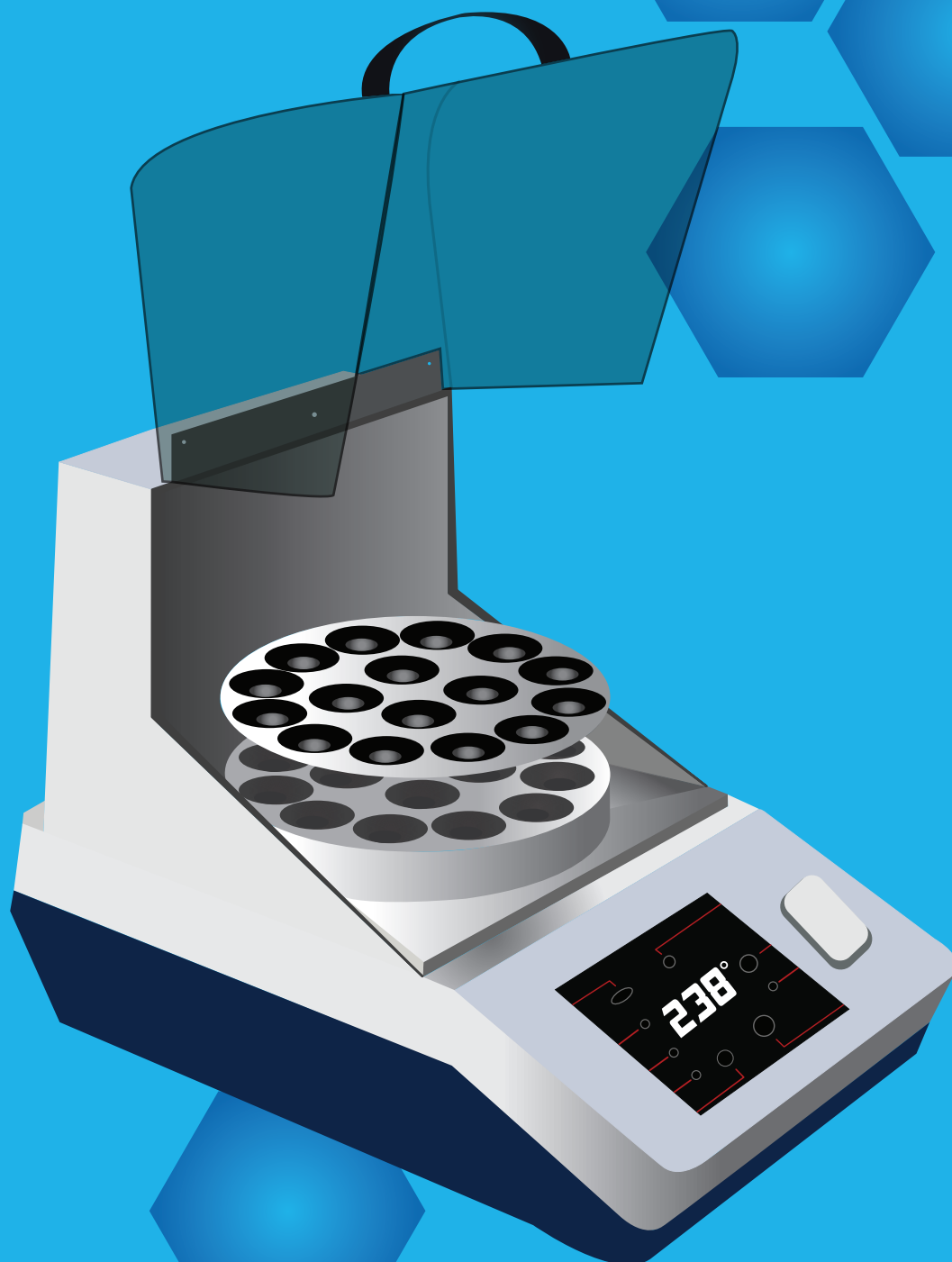


***RVLS:***  
***Your laboratory***  
***companion***



**AUTO**

**MATIC**

**LABOR**

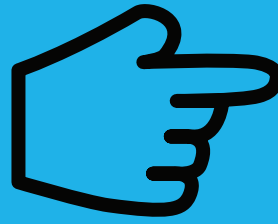
**ATORY**

**EX**

**PERT**

# 1. Automation

Automatically begin a series of accurate tasks including sampling pretreatment and the printing out of the results at a push of the start button.



# 2. Multi-functions:

Innovative integration of microorganism, residues, heavy metal, and additives inspection and analysis. Only takes 10 minutes from sampling pretreatment to result reporting for specific reagents. Accuracy up to 99.99%.



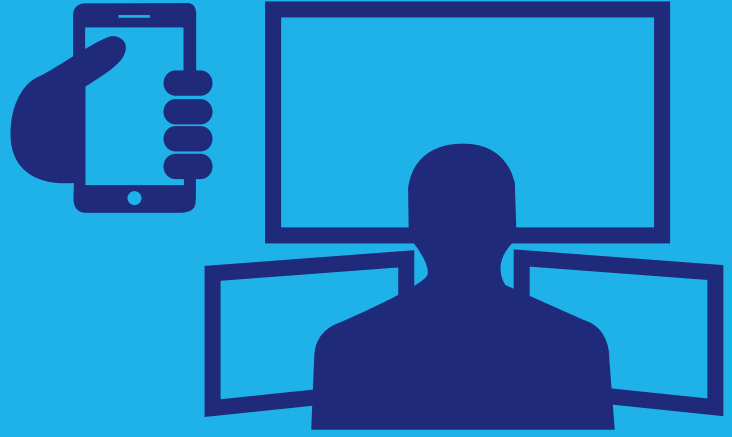
# 3. Various applications:

Food, environmental safety/water quality inspection, forensic examination, research etc.



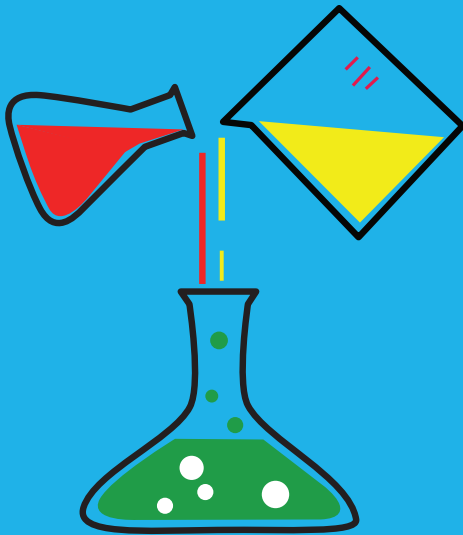
## 4. Time saving:

RVLS installs a network monitoring system which can connect to your pc, laptop or smartphone. This reduced the amount of manpower required for the lab.



## 5. GLP applied:

Fully automatic RVLS ensuring your experiments apply good laboratory practice (GLP, to ensure the uniformity, consistency, reliability, quality, reproducibility and data integrity).



## 6. Saving your money and space:

Innovatively integrating the functions of shaker, vortex, mixer, incubator, reader of microorganism/heavy metal/residues/ additives detection and extra test tube rack into a portable RVLS.



# *Fully automatic robot that exceeds your analysis requirement:*

1. Up to 16 independent analyses at once.

Capacity:

0.2 ml, 0.5ml, 1.5ml, 1.7ml, 2.0ml, 10 ml, 11 ml,  
15ml, 25 ml, 50ml tube/vial can be applied.

2. Full controls of incubating temperature, shaking speed, and time though manual or automatic setting.

Temp Range: + 5 to 60 degree C, labelled 30, 37,  
44 degree C

Speed Range: 300-3000 rpm, labeled 1000, 2500 rpm

3. Touch Screen LCD (5 inch) Display

4. Charge easily : 100-240V, 50/60 Hz,  
12V battery or car socket can be used as power supply.

5 .Operational Temp: 8- 40 degree C

6. Size: 32.5 cm X 25 cm X 23 cm

7. Made by UL and CE Standard

8. Designed by Germany, USA, made in USA

## ***Category:***

Microorganism, heavy metals, drug residues, additives.

## ***Applications:***

Food safety inspection, water quality inspection, environmental safety inspection, forensic examination, research and so on.

## ***Microbiological Reagents:***

Colonies, total coliforms, escherichia coli  
Escherichia coli O157 / O111 / O014 / EHEC,  
Staphylococcus aureus, Salmonella,  
Listeria monocytogenes, Pseudomonas aeruginosa,  
Pseudomonas aeruginosa  
Yeast, Aspergillus fungi and so on.

## ***Heavy Metal Detection Kit :***

Aluminum, arsenic, cadmium, chromium, cobalt,  
copper, iron, mercury,  
manganese, molybdenum, silver, thallium,  
tin, zinc, lead, nickel custom types.

Royal Biotech / Bettinastraße 30, 60325 Frankfurt am Main, Germany

/ Tel: +49-(0)69 / 97 461 – 374

[info@royalbiotech.com](mailto:info@royalbiotech.com) / [www.royalbiotech.com](http://www.royalbiotech.com)

Specially designed for Royal Biotech  
by Alisa Silko

